

Halloween Safety Tips from your friends at

# Waterloo Fire Rescue

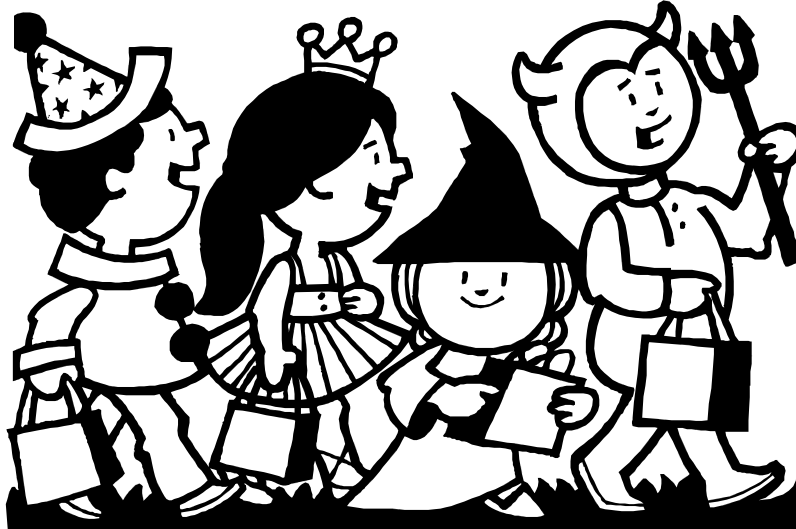
## Fire PALS



Examine all \_\_\_\_\_  
before eating.

When designing a \_\_\_\_\_,  
leave the carving to  
adults!

Consider \_\_\_\_\_ when  
decorating for  
Halloween.



All \_\_\_\_\_  
should be flame  
resistant.

Carry a \_\_\_\_\_  
to see and be seen.

Young children  
should \_\_\_\_\_  
with a grown-up.

Color in the picture and then use the words in this box to complete each Halloween Safety tip.

flashlight    treats    costumes    jack-o-lantern    fire safety    trick-or-treat

## Stay Safe this Halloween

- NEVER eat any treats until an adult at your home examines them.
- Trick or Treat with friends or with adult supervision. Don't go alone.
- NEVER enter the house or car of a stranger.
- Trick or Treat in the late afternoon or early evening.
- Trick or Treat in your own neighborhood, and visit only houses that you know.
- Stay on streets that are well lit and only cross the street at the corners.
- NEVER run across the street and always look both ways before crossing.
- Do not take short cuts through backyards, alleys, or parks.
- Carry a flashlight or wear reflective tape so drivers can see you and you can see hazards in the street as well as other people.
- Only trick or treat at houses where the porch light is on and well lit.

